



SUPERFICI CREATIVE

EXPONA®

NOW  
INCLUDING  
**SIMPLAY**  
ACOUSTIC



**SIMPLAY**

LOOSE LAY & ACOUSTIC LUXURY VINYL TILES



**SIMPLAY**

The innovative design features a glass fibre stabilisation layer to enhance dimensional stability, combined with a distinct honeycomb backing layer to ensure the planks and tiles remain in place.

**Available in all 25 shades**



**SIMPLAY**



The same innovative design, yet engineered with a fully incorporated IXPE 19dB acoustic backing layer to ensure the flooring is even more silent. Installation with a simple tackifier facilitates swift fitting.

**Available in 12 shades**



# LOOSE LAY DESIGN FLOORING

Expona Simplay presents a collection of loose lay vinyl planks and tiles, specifically developed for heavy commercial interiors which require design-led and practical floor coverings.

Authentic reproductions of natural materials have been created in an adhesive-free, ready to lay product, designed to significantly reduce installation time.

The innovative vinyl construction features a glass fibre stabilisation layer to enhance dimensional stability and also a unique honeycomb backing layer. Combining weight and friction, the honeycomb backing creates a strong bond to the subfloor ensuring the product remains in place without adhesive. As a result, planks and tiles are easily replaceable; ideal for temporary or permanent installations.



DESIGNED TO LAY  
ALONGSIDE MOST  
CARPET TILES



EASY TO LIFT UP AND  
REPLACE INDIVIDUAL  
PLANKS OR TILES

## PERFECT FOR



OFFICES

Office interiors, corridors, break-out rooms, storage, meeting and reception areas are ideal environments for use, enhancing design schemes and allowing easy underfloor access to cabling and pipework.



RETAIL

Retail interiors, front and back of house, zonal sales areas and presentation points are also ideal situations for use. Another benefit of Expona Simplay is that the individual floor tiles can be easily replaced, relocated and reused, allowing temporary sales areas to be successfully highlighted and refreshed.



HOSPITALITY

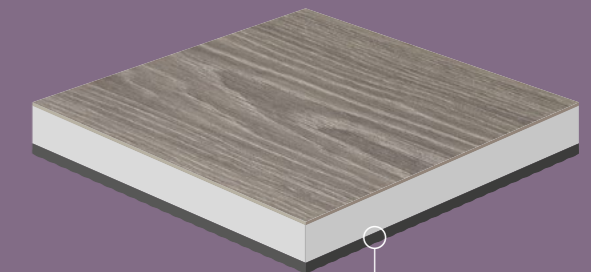
Hospitality environments including pop-up or permanent installations, exhibition spaces, restaurants, lobbies and guest rooms all perfectly meet the Expona Simplay criteria, even in busy footfall and demanding areas.

## EXPONA SIMPLAY 19dB

For areas which require a high-performance acoustic product without wanting to compromise on design, look no further than Expona Simplay 19dB. 12 shades from the Expona Simplay collection are also available with a fully integrated IXPE acoustic backing, reducing impact sound by up to 19dB, ideal for heavy traffic areas subject to intense use.



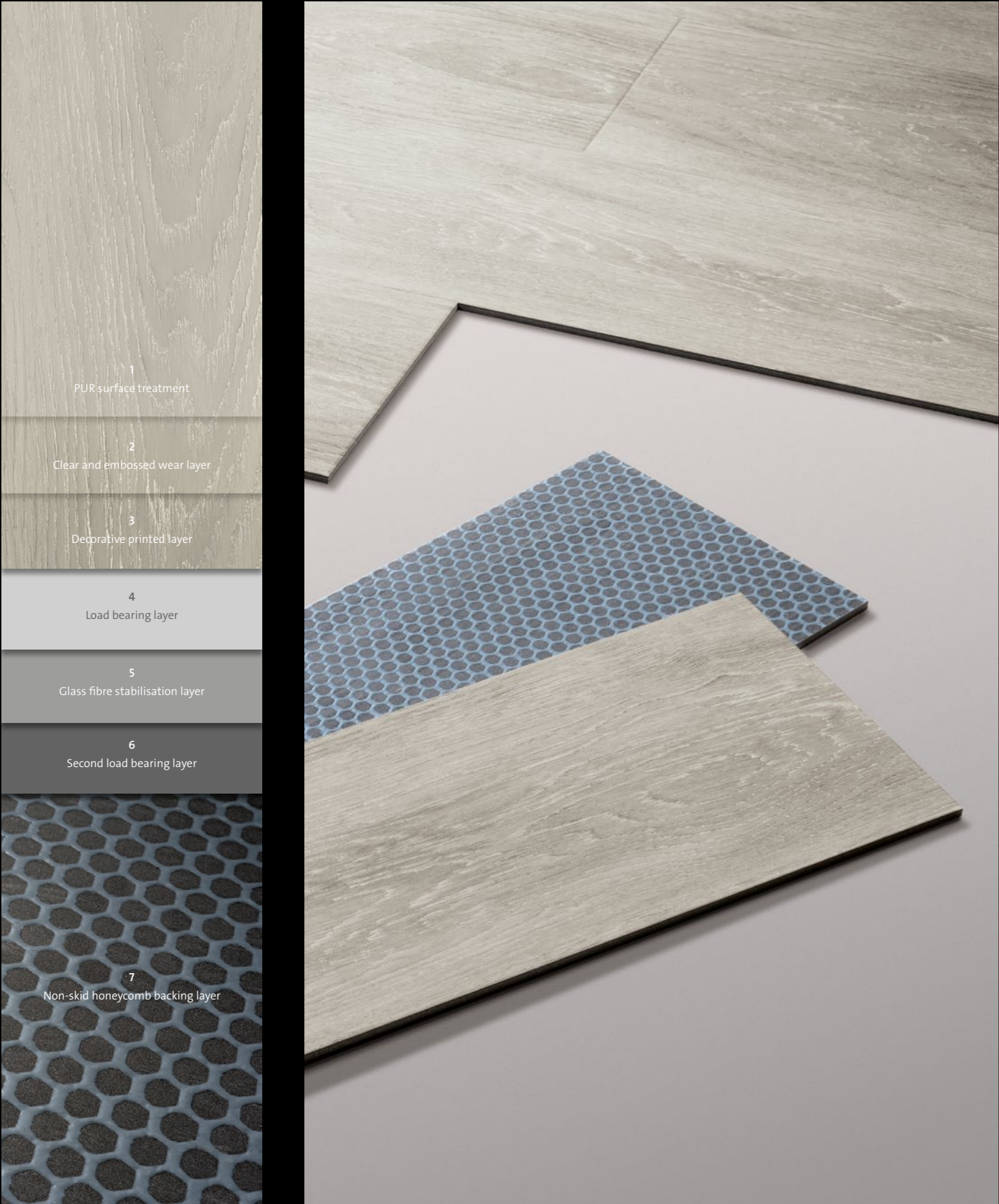
**Important:** Installation of Expona Simplay 19dB requires application of a tackifier to ensure the planks and tiles are securely held in place.



Acoustic backing on selected shades only. Look out for the 19dB acoustic symbol.



# EXPONA SIMPLAY



- 1 PUR surface treatment
- 2 Clear and embossed wear layer
- 3 Decorative printed layer
- 4 Load bearing layer
- 5 Glass fibre stabilisation layer
- 6 Second load bearing layer
- 7 Non-skid honeycomb backing layer

# EXPONA SIMPLAY 19dB



- 1 PUR surface treatment
- 2 Clear and embossed wear layer
- 3 Decorative printed layer
- 4 Load bearing layer
- 5 Glass fibre stabilisation layer
- 6 Second load bearing layer
- 7 IXPE impact sound insulation layer

### INSTALLATION WITH TACKIFIER

For more information contact Polyflor Customer Technical Services on +44 (0) 161 767 1912 or email [tech@polyflor.com](mailto:tech@polyflor.com)

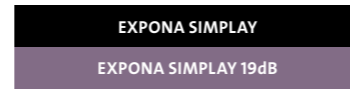




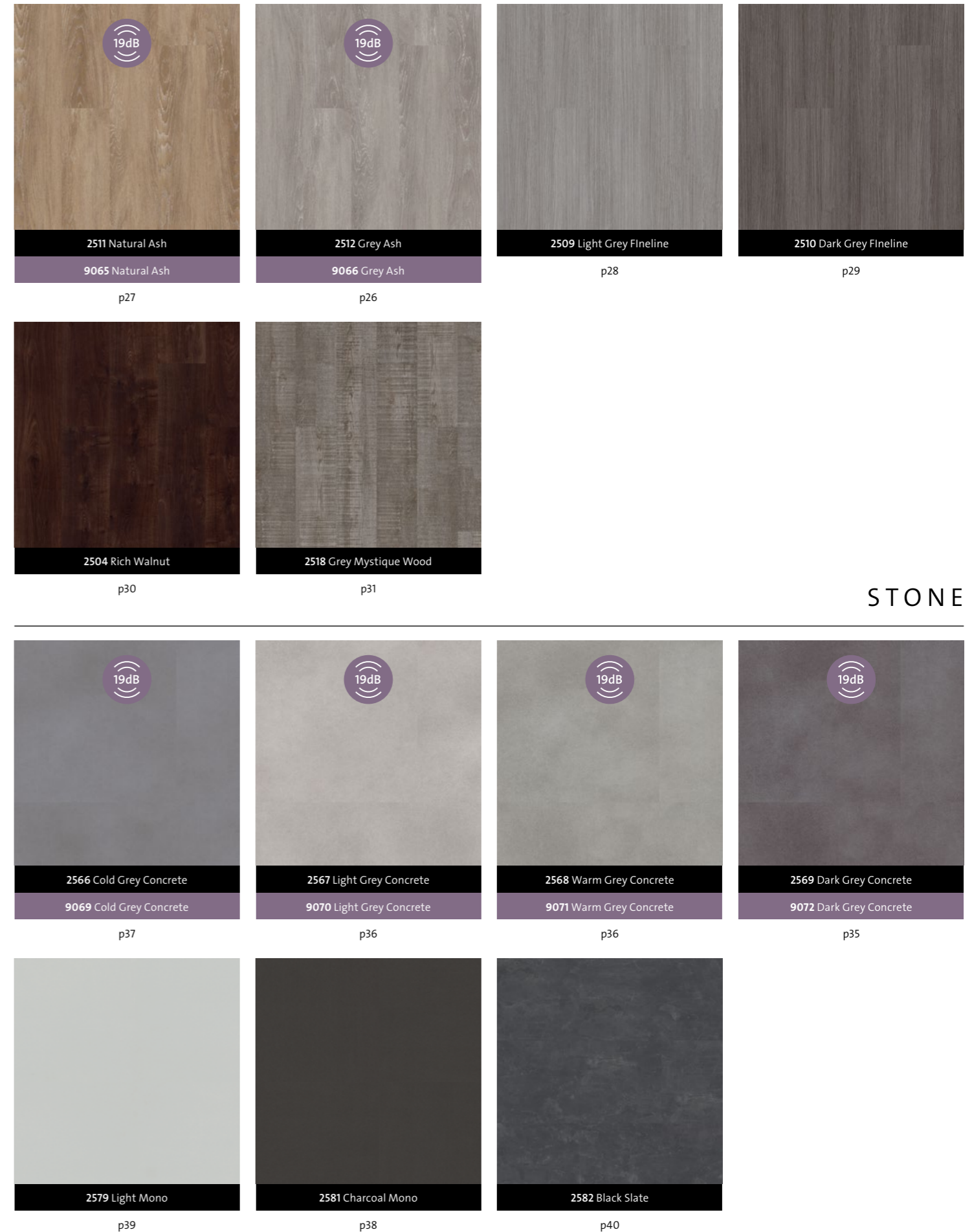
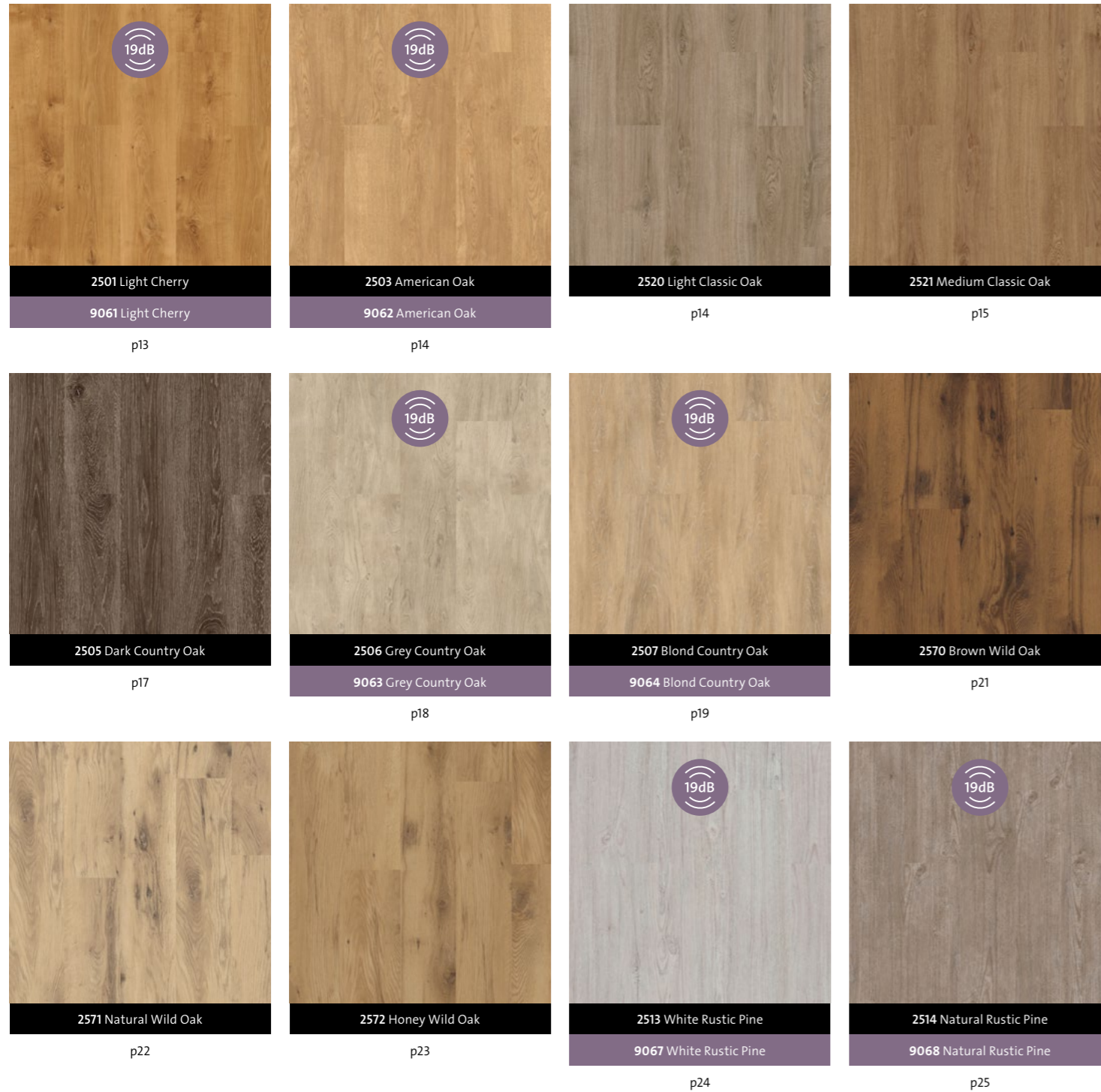
# COLLECTION OVERVIEW

The Expona Simplay collection of 25 shades, (12 available as Acoustic 19dB) spans a plethora of wood species, natural stone and man-made materials, each featuring a complementary surface texture for an authentic appearance. Browse through the following pages, or navigate directly to the shade you want using the references below.

See pages 42-43 for formats and sizes.



## WOOD



## STONE



# WOOD

# SIMPLAY

*Combining beautifully replicated timber plank designs and authentic wood textures, Expona Simplay encompasses a wide spectrum of wood species to suit any commercial interior. Each design features bevelled edges for a timeless timber plank effect, as well as fine grain and knot detailing which creates movement and natural variation, typical of real wooden floor coverings.*



**CLASSIC OAK**  
p.12



**COUNTRY OAK**  
p.16



**WILD OAK**  
p.20



**RUSTIC PINE**  
p.24



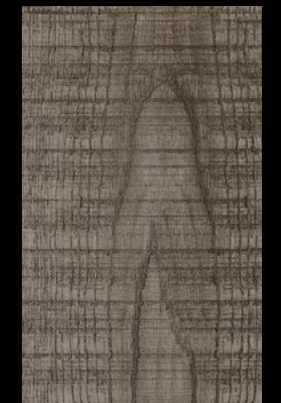
**ASH**  
p.26



**FINELINE**  
p.28



**WALNUT**  
p.30



**CROSS-SAWN**  
p.31



# CLASSIC OAK



**2501 Light Cherry**  
9061 Light Cherry (19dB)

177.8 x 1219.2mm  
Emboss: Fine wood structure



**2503 American Oak**  
9062 American Oak (19dB)

177.8 x 1219.2mm  
Emboss: Fine wood structure



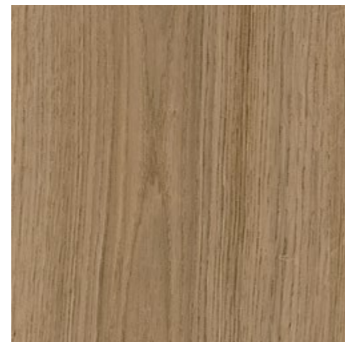
**2520 Light Classic Oak**

185 x 1505mm  
Emboss: Fine wood structure



**2521 Medium Classic Oak**

185 x 1505mm  
Emboss: Fine wood structure



**2501 Light Cherry**  
9061 Light Cherry (19dB)





CLASSIC OAK



2503 American Oak  
9062 American Oak (19dB)



2520 Light Classic Oak



2521 Medium Classic Oak



# COUNTRY OAK

19dB

19dB



**2505 Dark Country Oak**

177.8 x 1219.2mm  
Emboss: Rustic wood structure



**2506 Grey Country Oak**  
9063 Grey Country Oak (19dB)

177.8 x 1219.2mm  
Emboss: Rustic wood structure



**2507 Blond Country Oak**  
9064 Blond Country Oak (19dB)

177.8 x 1219.2mm  
Emboss: Rustic wood structure







2506 Grey Country Oak  
9063 Grey Country Oak (19dB)



2507 Blond Country Oak  
9064 Blond Country Oak (19dB)



# WILD OAK



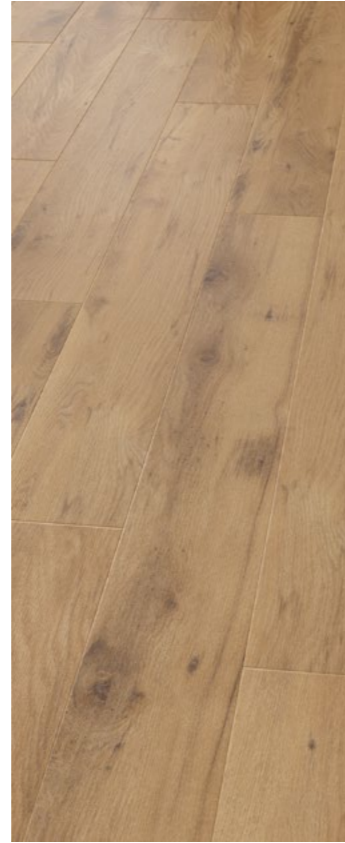
2570 Brown Wild Oak

177.8 x 1219.2mm  
Emboss: Satin wood structure



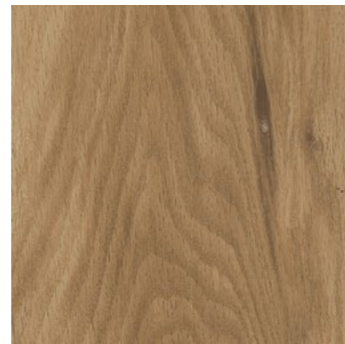
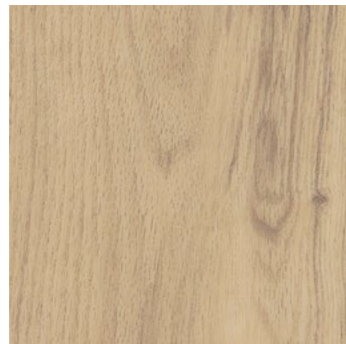
2571 Natural Wild Oak

177.8 x 1219.2mm  
Emboss: Satin wood structure



2572 Honey Wild Oak

177.8 x 1219.2mm  
Emboss: Satin wood structure







2572 Honey Wild Oak



# RUSTIC PINE



**2513 White Rustic Pine**  
9067 White Rustic Pine (19dB)

177.8 x 1219.2mm  
Emboss: Rustic wood structure



**2514 Natural Rustic Pine**  
9068 Natural Rustic Pine (19dB)

177.8 x 1219.2mm  
Emboss: Rustic wood structure



**2513 White Rustic Pine**  
9067 White Rustic Pine (19dB)



**2514 Natural Rustic Pine**  
9068 Natural Rustic Pine (19dB)



# ASH



**2511 Natural Ash**  
9065 Natural Ash (19dB)

177.8 x 1219.2mm  
Emboss: Fine wood structure

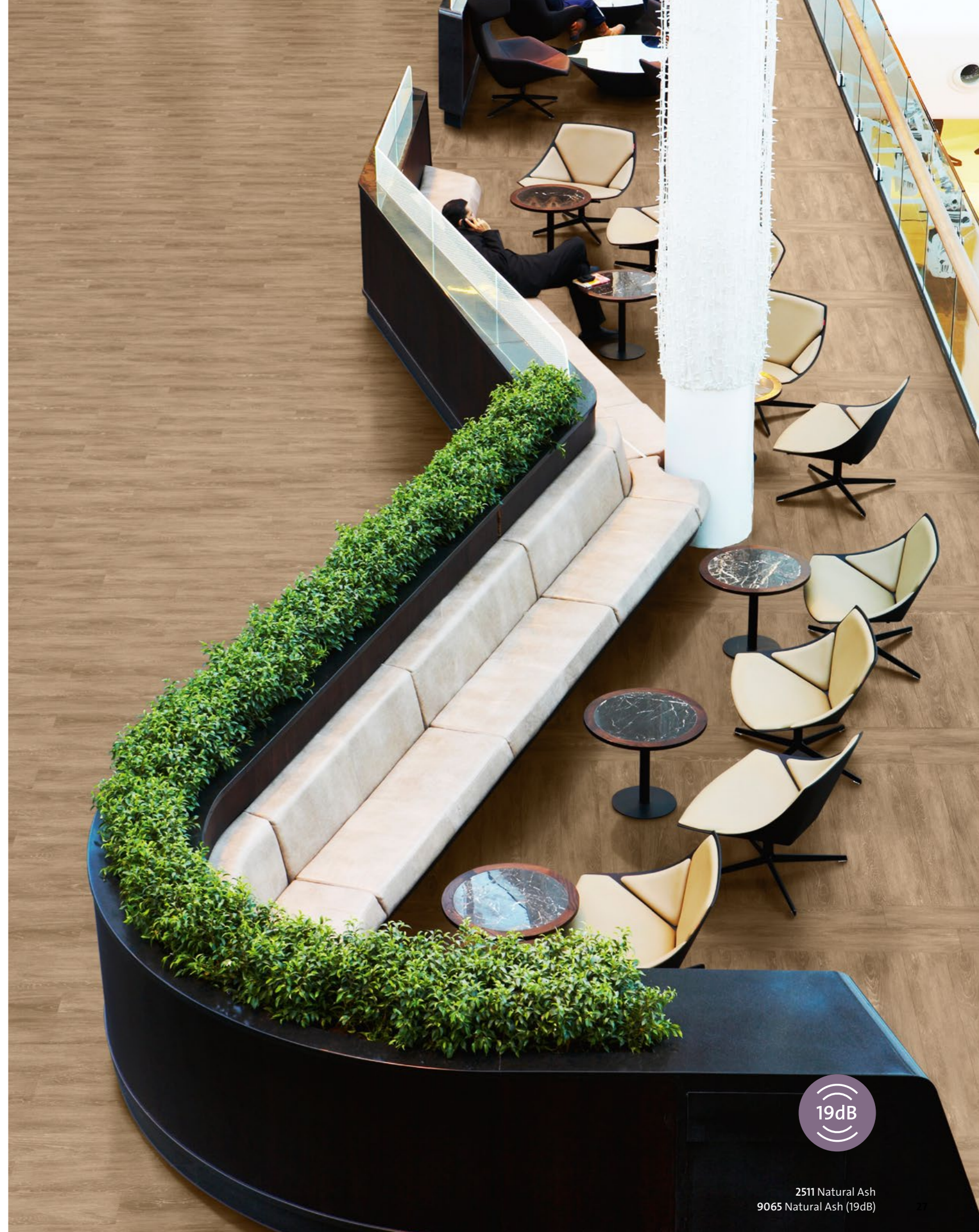


**2512 Grey Ash**  
9066 Grey Ash (19dB)

177.8 x 1219.2mm  
Emboss: Fine wood structure



**2512 Grey Ash**  
9066 Grey Ash (19dB)



**2511 Natural Ash**  
9065 Natural Ash (19dB)



# FINELINE



2509 Light Grey Finline

177.8 x 1219.2mm  
Emboss: Fine wood structure



2510 Dark Grey Finline

177.8 x 1219.2mm  
Emboss: Fine wood structure

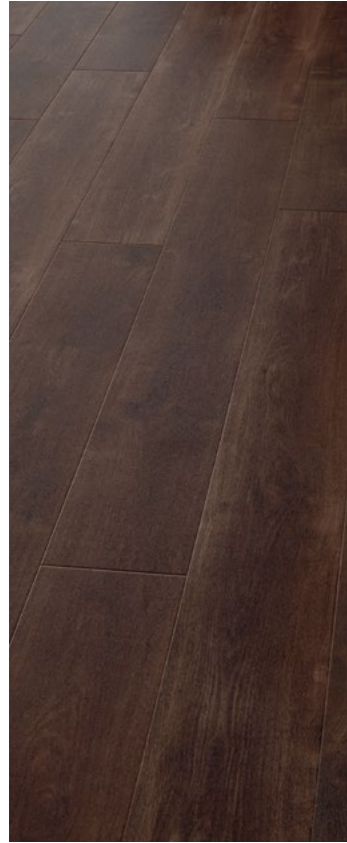


2509 Light Grey Finline



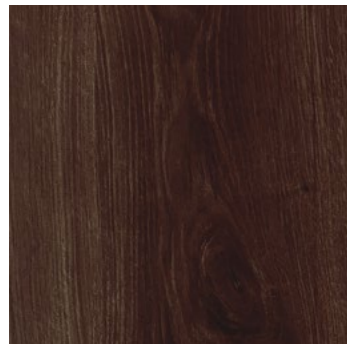


# WALNUT



2504 Rich Walnut

177.8 x 1219.2mm  
Emboss: Fine wood structure



# CROSS-SAWN



2518 Grey Mystique Wood

185 x 1505mm  
Emboss: Rustic wood structure





STONE

SIMPLAY

*Combining smooth and weathered designs with realistic surface textures, Expona Simplay Stone showcases a blend of natural and man-made materials for an authentic finish. Designed to enhance or blend seamlessly within new and existing interiors, the larger format tiles are an ideal choice for expansive commercial applications.*



**CONCRETE**  
p.34



**MONO**  
p.38



**SLATE**  
p.40



# CONCRETE



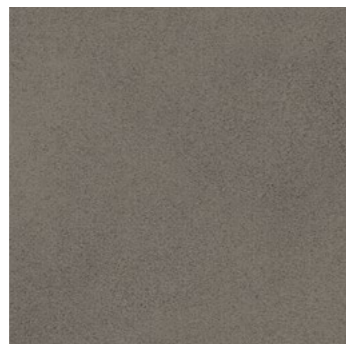
**2567 Light Grey Concrete**  
9070 Light Grey Concrete (19dB)

600 x 600mm  
Emboss: Fine stone structure



**2569 Dark Grey Concrete**  
9072 Dark Grey Concrete (19dB)

600 x 600mm  
Emboss: Fine stone structure



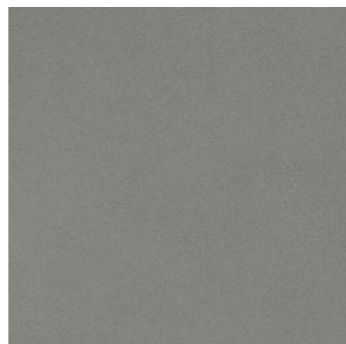
**2568 Warm Grey Concrete**  
9071 Warm Grey Concrete (19dB)

600 x 600mm  
Emboss: Fine stone structure



**2566 Cold Grey Concrete**  
9069 Cold Grey Concrete (19dB)

600 x 600mm  
Emboss: Fine stone structure



**2569 Dark Grey Concrete**  
9072 Dark Grey Concrete (19dB)



CONCRETE



2567 Light Grey Concrete  
9070 Light Grey Concrete (19dB)



2568 Warm Grey Concrete  
9071 Warm Grey Concrete (19dB)



2566 Cold Grey Concrete  
9069 Cold Grey Concrete (19dB)



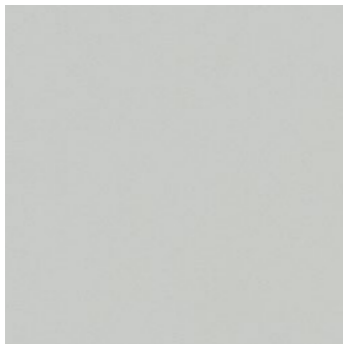
# MONO

## OVERSIZED TILES



**2579 Light Mono**  
914.4 x 914.4mm  
Emboss: Basalt stone structure

**2581 Charcoal Mono**  
914.4 x 914.4mm  
Emboss: Basalt stone structure



2581 Charcoal Mono





## SLATE



2582 Black Slate

304.8 x 609.6mm  
Emboss: Basalt stone structure



»» View the collection at a glance.

*The following pages summarise the Expona Simplay collection, featuring accurate product scans as well as detailing all plank and tile sizes.*

*Designs which are available in acoustic 19dB, feature pattern variations or bevelled edges are highlighted with corresponding icons for easy identification. Furthermore, the whole collection has been grouped by varying plank or tile size, therefore depending on the scale of installation a suitable design can be quickly selected.*



# WOOD COLLECTION

**177.8 x 1219.2mm**  
Box: 10 pieces  
Coverage: 2.17m<sup>2</sup>



**2501 Light Cherry**  
9061 Light Cherry (19dB)



**2503 American Oak**  
9062 American Oak (19dB)



**2504 Rich Walnut**



**2505 Dark Country Oak**



**2506 Grey Country Oak**  
9063 Grey Country Oak (19dB)



**2507 Blond Country Oak**  
9064 Blond Country Oak (19dB)



**2509 Light Grey Finline**



**2510 Dark Grey Finline**



**2511 Natural Ash**  
9065 Natural Ash (19dB)



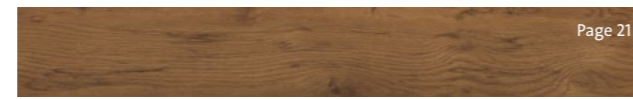
**2512 Grey Ash**  
9066 Grey Ash (19dB)



**2513 White Rustic Pine**  
9067 White Rustic Pine (19dB)



**2514 Natural Rustic Pine**  
9068 Natural Rustic Pine (19dB)



**2570 Brown Wild Oak**



**2571 Natural Wild Oak**



**2572 Honey Wild Oak**

**185 x 1505mm**  
Box: 8 pieces  
Coverage: 2.23m<sup>2</sup>



**2518 Grey Mystique Wood**



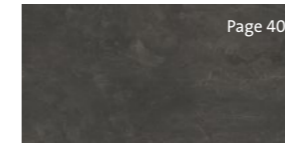
**2520 Light Classic Oak**



**2521 Medium Classic Oak**

# STONE COLLECTION

**304.8 x 609.6mm**  
Box: 10 pieces  
Coverage: 1.86m<sup>2</sup>

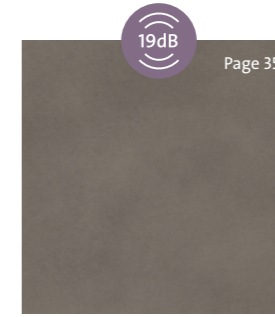


**2582 Black Slate**

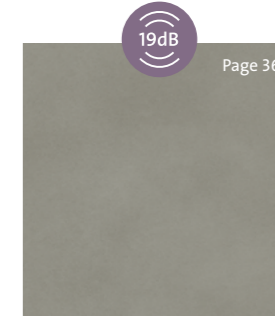
**600 x 600mm**  
Box: 6 pieces  
Coverage: 2.16m<sup>2</sup>



**2567 Light Grey Concrete**  
9070 Light Grey Concrete (19dB)



**2569 Dark Grey Concrete**  
9072 Dark Grey Concrete (19dB)



**2568 Warm Grey Concrete**  
9071 Warm Grey Concrete (19dB)



**2566 Cold Grey Concrete**  
9069 Cold Grey Concrete (19dB)

**914.4 x 914.4mm**  
Box: 4 pieces  
Coverage: 3.34m<sup>2</sup>



**2579 Light Mono**



**2581 Charcoal Mono**

Bevelled edges Pattern and/or colour variation Oversized tiles

Although we endeavour to ensure the brochure print process replicates a true colour depiction of each product, we recommend you view an actual sample which we shall be pleased to supply, free of charge. Visit [www.polyflor.com](http://www.polyflor.com) and follow the samples link for further details.



# DECORATIVE DESIGN FLOORS

Laid individually, Luxury Vinyl Tiles allow us to discover a plethora of flooring designs, including zoning and decorative patterns. By using a single shade or combining varying planks or tiles in an assortment of layouts, stunning results can be achieved with little effort. What's more, the ease of Expona Simplay to be laid, lifted and moved elsewhere means design floors can be refreshed with minimum disruption.

Double Plank Tramline



## DESIGNS TO MIX & MATCH

With little or no cutting required, beautiful flooring installations such as herringbone in one or more shades, can create eye-catching installations. Our diverse designs, which can be mixed, allow us to bring you an extremely wide portfolio of innovative decors for your flooring. There's no end of imaginative combinations.

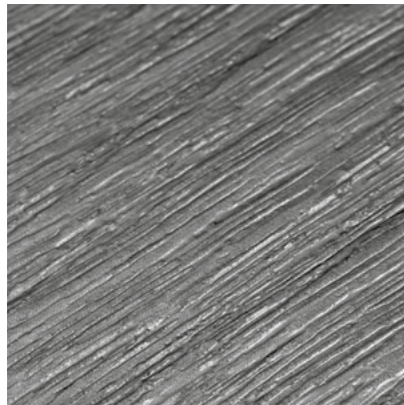




# EMBOSSING

Expona Simplay offers exceptional quality and a range of leading wood and stone designs as a result of extensive research and innovative product development.

The surface embossing developed for Expona Simplay has been designed to precisely replicate the appearance and feel of real wood and natural stone structures. The combination of high clarity films with tactile surface finishes mirrors the authentic beauty of natural timber and stone without the maintenance to match.



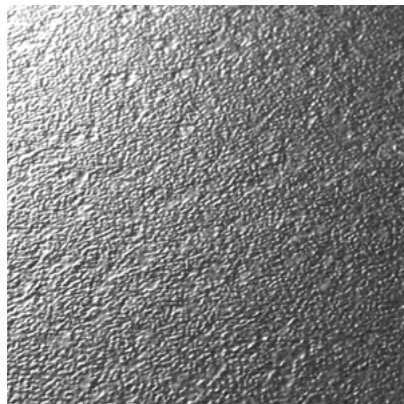
Satin wood structure



Fine wood structure



Rustic wood structure



Basalt stone structure



Fine stone structure

# BEVELLED EDGES

Bevelled edges accentuate the individual form of each Expona Simplay plank and tile, creating a more authentic floorboard or tile effect when laid.



# SUPPORT

## CONTACT US

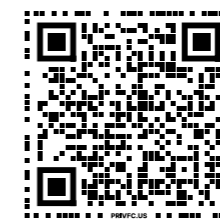
For general information on your specific project, either speak with your local Polyflor provider or contact us directly. If you require additional detailed technical data, either visit [polyflor.com](https://polyflor.com) and follow the links to the technical pages, contact Polyflor Customer Technical Services on **+44 (0) 161 767 1912** or email [tech@polyflor.com](mailto:tech@polyflor.com).

## ORDER SAMPLES

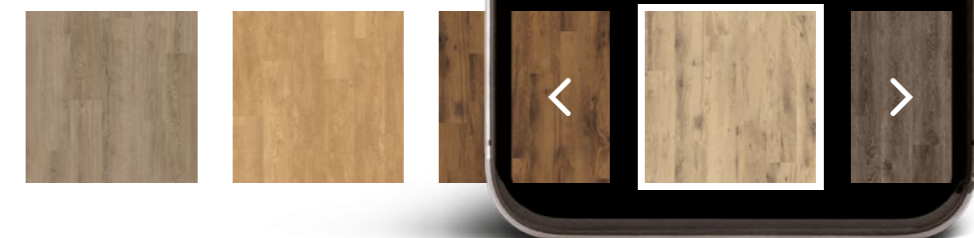
Polyflor provide a complementary product sample service so you can sample your choice of flooring before you make your final selection, and ensure you find the exact floor covering you are looking for. To order your free sample of any Expona Simplay colour, visit the Polyflor website, call the dedicated Polyflor Samples Hotline on **+44 (0) 161 767 2551** or speak with your local Polyflor provider.

# PICTURE IT INSTANTLY

- ▶ Visit [polyflor.com/commercialvisualiser](https://polyflor.com/commercialvisualiser)
- ▶ Take a photo of your project
- ▶ Enter the four digit shade number or name to select your favourite floor
- ▶ See the transformation
- ▶ Save, share and order free samples



SCAN HERE TO TRY IT NOW





# TECHNICAL SPECIFICATION

Product Sizes	Size	Shades	Quantity per Box	Coverage per Box
Plank	177.8mm x 1219.2mm	15	10	2.17m <sup>2</sup>
	185mm x 1505mm	3	8	2.23m <sup>2</sup>
Tile	304.8mm x 609.6mm	1	10	1.86m <sup>2</sup>
	600mm x 600mm	4	6	2.16m <sup>2</sup>
	914.4mm x 914.4mm	2	4	3.34m <sup>2</sup>

Product Format	Standard	SIMPLAY	SIMPLAY 19dB
Gauge	ISO 24346 (EN 428)	5.0mm	5.0mm
Wear Layer	ISO 24340 (EN 429)	0.70mm	0.55mm
Total Weight	ISO 23997 (EN 430)	8000g/m <sup>2</sup>	6380g/m <sup>2</sup>
Finish		PUR	PUR

Performance Requirements	Standard		
General Performance	ISO 10582 (EN 649) ISO 11638 (EN 651) ASTM F1700	Conforms - Class III Type A+B	- Conforms -
Use Area	ISO 10874 (EN 685)	23, 34, 43	23, 33, 42**
Slip Resistance	EN 13893 DIN 51130/DIN EN 16165 Ann. B AS 4586 ASTM D2047	Class DS R10 R10 SCOF ≥0.5	Class DS R10 R10 SCOF ≥0.5
Binder Content	ISO 10582	Type I	Type I
Abrasion Resistance	EN 649	Group T	Group T
Reaction to Fire	EN 13501-1 ASTM E662 ASTM E648 AS ISO 9239-1 CAN/ULC S102.2	Class Bfl-S1 <450 Pass Class 1 >8 kW/m <sup>2</sup> FSV < 300; SDV < 500	Class Cfl-S1 - Class 1 >4.5 kW/m <sup>2</sup> FSV < 300; SDV < 500
Static Electrical Propensity	EN 1815	≤2.0kV Classified as 'antistatic'	-
Residual Indentation	ISO 24343-1 (EN 433) ASTM F970 ASTM F1914	≤0.10mm* ≤0.005" @ 750psi ≤0.005"	≤0.20mm* 0.018" @ 750psi*** 0.019"****
Castor Chair (continuous use)	ISO 4918 (EN 425)	Suitable	Suitable
Dimensional Stability	ISO 23999 (EN 434) ASTM F2199	≤0.10% Pass	≤0.25% Pass
Flexibility	ASTM F137	1" - Pass	1" - Pass
Underfloor Heating		Suitable, max 27°C	Suitable, max 27°C
Light Fastness	ISO 105-B02 (Method 3)	≥6	≥6
Resistance to Light	ASTM F1515	ΔE ≤ 8.0 - Meets	ΔE ≤ 8.0 - Meets
Resistance to Heat	ASTM F1514	ΔE ≤ 8.0 - Meets	ΔE ≤ 8.0 - Meets

Sustainability	Standard		
BRE Green Guide		A+ Generic	A+ Generic
Recyclable & Reusable		100%	100%
Recycled Content		20%	17%
Bio-PVC		Contains Bio-PVC	Contains Bio-PVC
REACH		Compliant	Compliant
Indoor Air Comfort Gold		Eurofins certified product	Eurofins certified product
FloorScore		Certified	Certified
Finnish M1 Classification		Meets requirements****	-
AgBB/ABG		Pass	Pass

Acoustic Performance	Standard		
Impact Sound Reduction	ISO 10140-3	8dB	19dB
Sound Transmission Coefficient	ASTM E90/492	STC 55	STC 55
Impact Insulation Class	ASTM E90/492	IIC 46	IIC 56
IXPE Acoustic Layer		-	1.0mm

Maintenance Performance	Standard		
Resistance to Chemicals	ISO 26987 (EN 423) ASTM F925	Good resistance Good resistance	Good resistance Good resistance

Resistant depending on concentration and time of exposure, in case of increased impact of oils, grease, acids and alkalis and other aggressive chemicals – please contact us.  
Regular light maintenance is more cost-effective than periodic heavy maintenance and more beneficial to the floor covering.

- \* Average test value from current production.
- \*\* Heavy rolling loads to be avoided.
- \*\*\* When tested with pre-attached underlay.
- \*\*\*\* Product tested and report available on request.





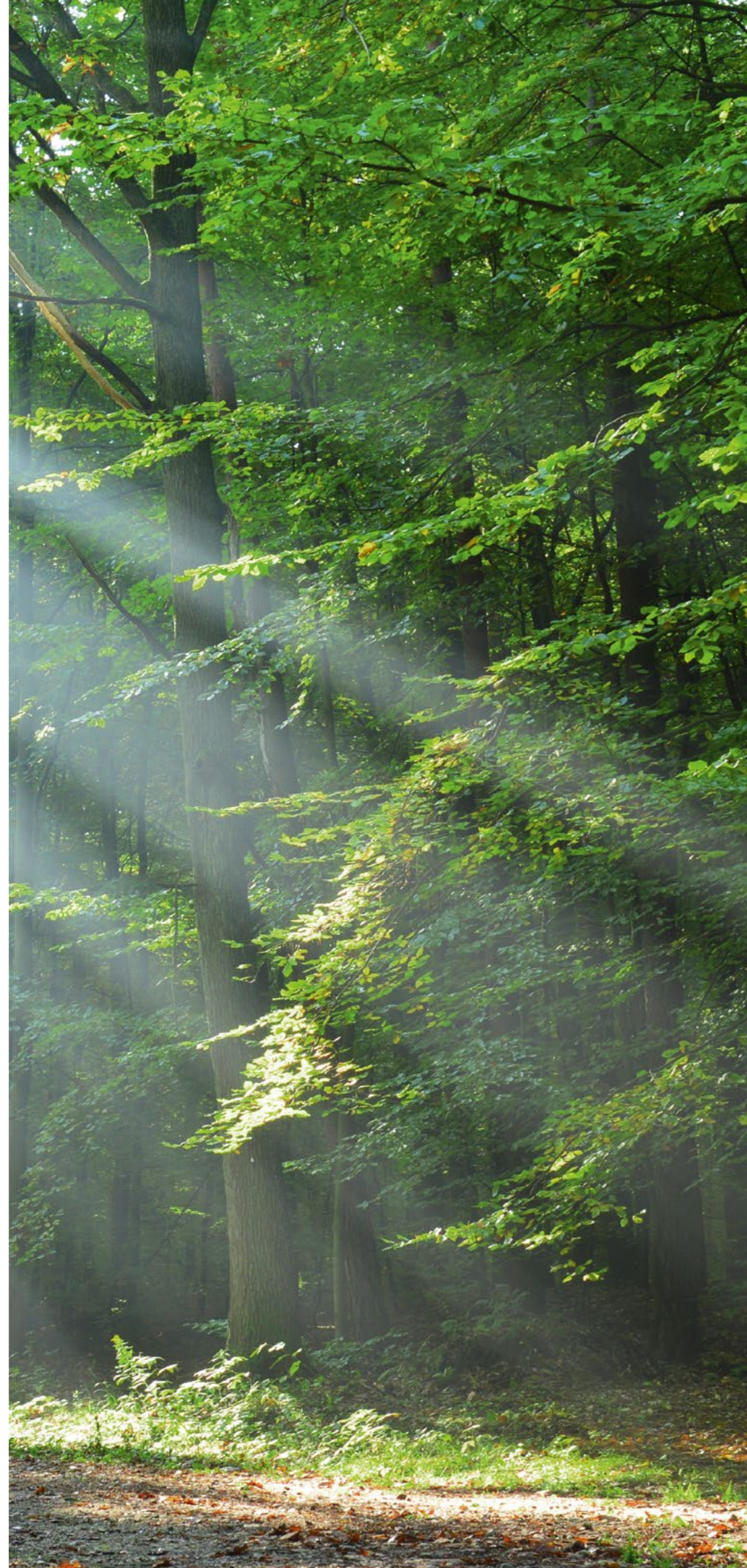
# SUSTAINABILITY

As a leading global manufacturer of high-quality, high-performance sustainable floor coverings, Polyflor has demonstrated a significant level of commitment to minimising environmental impact. This meets the company's values, but also complies with ongoing objectives for ISO 14001 Environmental Management System and BES 6001 Responsible Sourcing accreditation.

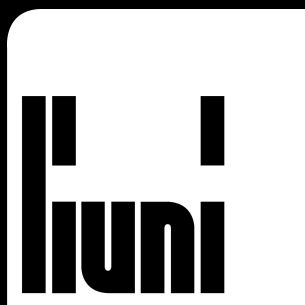
Expona Simplay is 100% recyclable, whilst also containing up to 20% recycled material. It contains 64% natural material, is phthalate free, REACH compliant and contains Bio-PVC. Not only do Polyflor look to minimise their carbon footprint, but yours too. Expona Simplay is extremely durable with its 0.7mm wear layer and PUR finish, and if installed and maintained correctly can last for 15 years or beyond. Easily cleaned with fewer chemicals, less water, and less energy, it is also non-shedding and does not harbour dust – important for clean air quality.

Furthermore Expona Simplay achieves Indoor Air Comfort Gold and FloorScore certification for exceptionally low VOC emissions, providing indoor air quality and comfort. In support of sustainable construction, particularly with regards to BRE, LEED, WELL, SKA and Green Star projects, Polyflor has a product specific EPD (Environmental Product Declaration), to assist.

For more information on our sustainability credentials, go to [www.polyflor.com](http://www.polyflor.com)







**SUPERFICI CREATIVE**

**[WWW.LIUNI.COM](http://WWW.LIUNI.COM)**